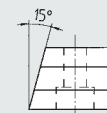
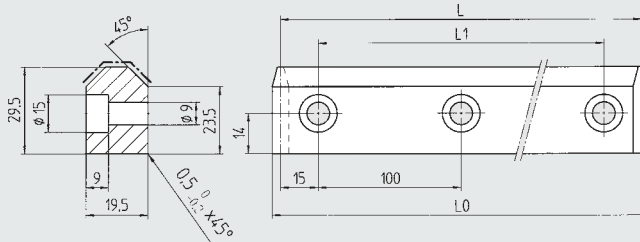
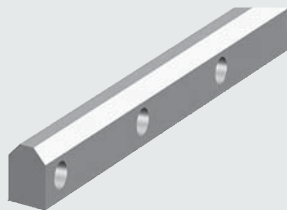


Konstruktionsabmasse
Cotes de montage
Mounting dimensions

Führungsschiene

Rail de guidage

Guideway vee bar



Type	Part No.	L	L ₀	L ₁	Mat.	m (kg)
FS 200	900 320	1 030	1 035.23	1 000	58CrMoV4 1.7792	4,00
	900 321	630	635.23	600	58CrMoV4 1.7792	2,50
	900 322	330	335.23	300	58CrMoV4 1.7792	1,30
FS 200 R	900 992	630	635.23	600	X42Cr13 1.2083	2,40



DIN 912 8.8 M_A
M8x20 24 Nm

Führungszahnstange

Rail crémaillère de guidage

Guideway vee rack

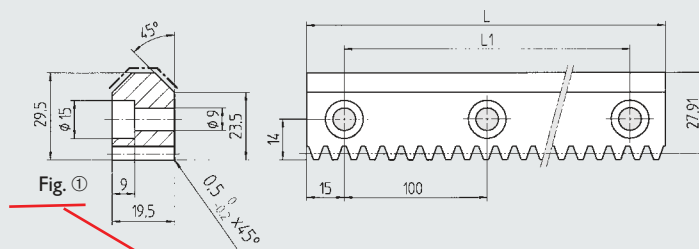
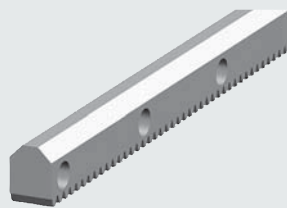


Fig. ①

Fig. ②

Type	Part No.	L	L ₁	Module	p	Fig.	Mat.	m (kg)
FZ 20	900 120	1 030	1 000	1.5915	5,0	①	58CrMoV4 1.7792	3,90
	900 121	630	600	1.5915	5,0	①	58CrMoV4 1.7792	2,40
	900 122	330	300	1.5915	5,0	①	58CrMoV4 1.7792	1,25
FZ 20 G	900 070	1 030	1 000	1.5915	5,0	②	58CrMoV4 1.7792	3,90
	900 071	630	600	1.5915	5,0	②	58CrMoV4 1.7792	2,40
	900 072	330	300	1.5915	5,0	②	58CrMoV4 1.7792	1,25
FZ 20 R	900 997	630	600	1.5915	5,0	②	X42Cr13 1.2083	2,40

weich, soft
Quality
7h25

hart, trempé
Quality
6h23



Einbau
Montage / Assembly
Seite / Page 01.71

Antriebsritzel

Pignon

Drive pinion

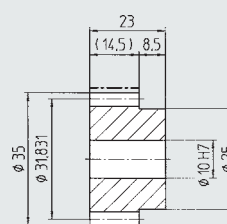
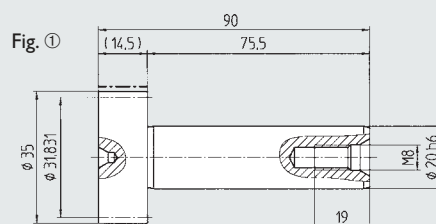
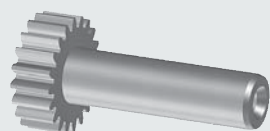


Fig. ②

Pinions are
together with
those racks

Type	Part No.	z	Module	p	Fig.	Mat.	m (kg)
WR 20	900 920	20	1.5915	5,0	①	16MnCr5 1.7131	0,30
MR 5	154 050	20	1.5915	5,0	②	16MnCr5 1.7131	0,10

hart, trempé
Quality
6f24

p (mm) Teilung, pas, pitch